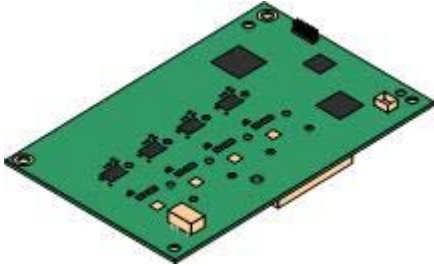


Avaya IP500 4 Line Trunk Card (Comcode 700417405)



- Connects to IP500 base card - When connected to IP500 base card, it provides 4 loop-start analog trunk ports
- Also provides DTMF, caller ID (ICLID), busy tone detection
- Adjustable echo cancellation - Selectable to Off, 8, 16, 32, 64, and 128 milliseconds
- Power Failure Transfer - When fitted to an IP500 analog phone base card. During power failure, the first extension port (port 1) is connected to the first analog trunk (port 9)
- Maximum - 4 per IP500 control unit